



Retail Merchant Essentials

We've got you covered

The UK's trusted supplier of
specialist construction products



GWB

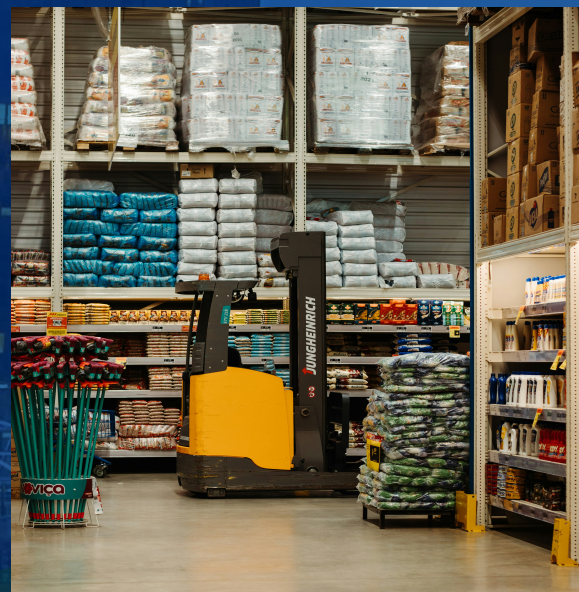
Nationwide Merchant Support Centre

A dedicated team providing unrivalled sales and technical advice from the UK's trusted supplier of specialist construction products.

Since GWB was formed in 1999 both national and independent builders merchants have been key customers. Merchants' local branches have been dealing with their local GWB depot, enjoying the excellent service on offer. However, as demand has increased we have created a centre specifically for merchant support, offering a priority service at both head office and local branch level.

As part of our commitment to builders merchants we are supplier members of the NMBS, BMF, Fortis, h&b & NBG. Ordering from GWB has never been easier.

All these factors are what make GWB the UK's trusted supplier of specialist construction products.



Our Merchant Support Team offers:

- ✓ Dedicated Support Team
- ✓ Extensive Range Availability
- ✓ Unrivalled Technical Knowledge
- ✓ Quick Quotations
- ✓ Branches Nationwide Including 2 Supercentres
- ✓ Same/Next Day Delivery
- ✓ Freephone Support Line
- ✓ Fast And Efficient Service



Product Ranges Include:



Concrete Repair/Protection



Grouts & Anchors



Joint Sealants & Adhesives



Roofing



Flooring



Waterproofing



Highways & Urban Landscaping



Passive Fire Protection



RAPID SET CONCRETE



FLEXCRETE FASTFILL

INTERCRETE 4802

SIZE: 25KG - SKU: 015FF25

Fastfill is a single component, polymer modified, fibre reinforced Portland cement based repair mortar. It is rapid curing with enhanced polymeric properties and reliable strength development which is not significantly affected by low temperature use. Can be used as supplied up to 100mm deep, or bulked out with sharp sand or aggregate to a flowing consistency for floor or deck repairs up to a maximum depth of 300mm.

Features and benefits:

- Incorporates the latest cement chemistry, microsilica, fibre and styrene acrylic copolymer technology.
- Generally requires no substrate or inter-layer priming.
- Sets in 10 minutes at 20°C, yielding a durable, high strength mortar.
- Rapid strength development at sub-zero temperatures.
- Repairs can be walked on after one hour and opened vehicular traffic in two hours.
- Bond strength exceeds tensile strength of concrete, ensuring monolithic performance.
- Dense matrix with low permeability to water.
- High diffusion resistance to acid gases & chloride ions.
- Resistant to sulphates to class DS-5M of BRE Special Digest 1.

Uses:

- Used for the durable repair of concrete subject to heavy wear such as roads, runways, bridges, decks, floors and footpaths.
- Also suitable for marine repairs and approved for potable water applications.
- Ideal for tidal repairs due to rapid setting properties.



PAREx TECFAST CONCRETE

R4 RAPID SETTING, DEEP SECTION, REPAIR MORTAR

SIZE: 25KG - SKU: 039C25

Parex Tecfast Concrete is a cement based, one-component, rapid setting, shrinkage compensated repair concrete. Parex Tecfast Concrete is suitable for all concrete works where early strength development is required in order to allow early use of the placed sections. The product may be used for localised repairs plus large area placement or reinstatement of concrete pavements

Features and benefits:

- High early strength gain.
- 20 - 650mm application thickness.
- Good chemical resistance.
- No special curing required.
- Suitable for use in exposure classes: X0, XC4, XS3, XD3, XF1, XA1.

Uses:

- Concrete repairs to accept foot and vehicular traffic.
- Forming of new pavement areas.
- Reinstatement of deteriorated pavement areas.
- Rapid repairs to roadways and runways.
- Structural support situations.



rbs RAPID SET 45 CONCRETE

RAPID SET, SHRINKAGE COMPENSATED REPAIR CONCRETE

SIZE: 25KG - SKU: 004RC

rbs Rapid Concrete is a rapid set, high early strength repair concrete, consisting of a dry blend of polymer modified Portland Cement and limestone aggregate. Its high performance exhibits a fast development of physical properties allowing early return to service, especially suitable for heavily trafficked areas. The new improved formula provides an improved cold working performance giving a faster set and improved strengths at early stages.

Features and benefits:

- High early strength.
- Rapid setting time between 25-30 minutes.
- Works at lower temperatures >5°.
- Shrinkage compensated.

Uses:

- High strength repairs to pavement concrete thin bed and full depth.
- Complies to Department of Transport Standard BD 27/86.
- Industrial floors, loading bays or failed floor slabs.
- Parking decks and ramps.
- Airport hardstandings.



ARDEX A46

MULTI PURPOSE CONCRETE REPAIR MORTAR

SIZES: 5KG - SKU: 005A465
11KG - SKU: 005A46

ARDEX A 46 is a rapid concrete repair mortar which is ideal for external and internal use. The polymer-modified mortar sets and hardens fast to give a repair of high performance, strength and hardness with a smooth paintable finish. Available in 11kg bags or a convenient 5kg van friendly bag-in-a-bucket.

Uses:

- Ideal for the rapid repair of damaged concrete.
- Suitable for damaged concrete, repairing bug holes, gaps, damaged stair nosings, wall edges, filling tie bolt holes, filling cracks, soffit repair and building ramps and falls.

Features and benefits:

- Sets within 30 minutes.
- Slump free – ideal for wall and floor repairs.
- Apply from 2mm to 50mm thick.
- For internal and external use.
- Easy to smooth and float.
- Shrinkage compensated, and crack free.

CEMENTITIOUS GROUTS



WEBERCEM ADVANCED PRECISION GROUT

SHRINKAGE COMPENSATED,
FLOWABLE PRECISION GROUT

SIZE: 25KG - SKU: 001APG

webercem advanced precision grout is a premixed cementitious grout developed for applications where an economical grout with good flow and strength is required. webercem advanced precision grout is based on specially selected Portland cements, graded aggregates and admixtures. It is designed primarily as a flowing grout but can also be used at a trowellable or dry pack consistency. Complies with BS EN 1504-3 and -6.

Features and benefits:

- Effectively non-shrink by Early Volume Change of Cementitious Mixtures which, unlike other methods, measures expansion or shrinkage from time of placing.
- Volume expansion when unrestrained is greater than 1.0%.
- Precision grout suitable for use over a range of temperatures and site conditions.
- Can be pumped, poured, trowelled or dry packed.
- Thermal expansion similar to that of good quality concrete.
- Good flow properties.
- Can be applied in thicknesses from 10mm to 100mm.
- Does not significantly lose workability during pot life.

Uses:

- Under stanchion plates and machinery (static loads only).
- Grouting bearings, precast units, floors etc.
- Fixing anchor bolts, balustrades, crash barriers, starter bars.
- For underpinning and void filling.



CONBEXTRA GP

HIGH-FLOW, NON SHRINK,
CEMENTITIOUS GROUT

SIZE: 25KG - SKU: 002CGP

Conbextra GP is supplied as a ready to use dry powder. The addition of a controlled amount of clean water produces a free-flowing grout for gap thicknesses up to 75mm. The low water requirement ensures high early strength and long-term durability. Conbextra GP is a blend of Portland cements, graded fillers and chemical additives. The filler grading produces a highly flowable grout which will not segregate or bleed.

Features and benefits:

- Non-shrink.
- High strength.
- Chloride free.
- Can be used at flowable or trowelable consistency.

Uses:

- Stanchion baseplates.
- Joints between pre-cast concrete panels.
- Grouting applications where pouring access is restricted.
- Anchoring of reinforcing steel bars.
- Installation of tie bars.
- Trowelling consistency can be used for bedding and in lieu of dry packs.



SIKAGROUT®-111 GP

CEMENTITIOUS GENERAL
PURPOSE GROUT

SIZE: 25KG - SKU: 003G111

SikaGrout®-111 GP is a one part flowable shrinkage compensated general purpose cementitious grout. Meets the requirements of BS EN 1504-6. Anchoring of reinforcing bars.

Features and benefits:

- Easy to use (ready to mix powder), just add water then mix and apply.
- Pre batched for quality.
- High compressive strength gain.
- Contains no chloride admixtures.
- Shrinkage compensated.
- Fire rating and protection properties comparable to concrete.
- Can be pumped or poured.
- Good mechanical properties.

Uses:

- General purpose grouting.
- Under stanchion plates.
- Filling cavities, voids, gaps and recesses.
- Sealing around penetrations.
- Machine & base plates.
- Post fixings.
- For exterior and interior use.



MAPEFILL ZERO

FLUID MORTAR WITH POSITIVE
INTERNAL STRESS

SIZE: 25kg - SKU: 096MFZ25

Mapefill Zero is a pre-blended powdered grout composed of high strength cement, graded aggregates and special admixtures with an expansive agent. Thanks to its particular formulation the product has excellent fatigue behaviour up to at least 300,000 cycles, which gives repaired structures a high level of resistance to cracking, including when subject to dynamic loads induced during normal service conditions. This particular characteristic, together with the requirements of EN 1504, helps increase the durability of elements restored with Mapefill Zero.

Features and benefits:

- CO₂ fully offset.
- Excellent impermeability to water.
- Excellent resistance to dynamic / mechanical stress.
- Modulus of elasticity and thermal expansion coefficient similar to those of high quality concrete.
- Resistant to lubricants.
- Excellent adhesion to iron and concrete.

Uses:

- Anchoring of machine tools by casting below the machine base.
- Anchoring structural steel work.
- Filling of rigid joints between elements in concrete and precast concrete structures.
- Installations below wall level.

WATERPROOFING



SHEETSEAL 226

COLD APPLIED WATERPROOFING BARRIER

SIZE: 150MM X 19.05M - SKU: 014SS226150
300MM X 19.05M - SKU: 014SS226300
1.05M X 19.05M - SKU: 004SS226

Sheetseal 226 is typically used to provide a water and water vapour barrier in all forms of construction, particularly where large unobstructed areas are to be treated. Typical installations include floors, retaining walls and similar uncluttered surfaces. When designing Type A (barrier) protection, as classified in BS 8102: 2009, the product applied correctly, is capable of providing the levels of protection required for Grades 1, 2 & 3 basements. Subject to normal conditions of use Sheetseal 226 will provide an effective barrier to the transmission of liquid water and water vapour for the life of the structure. The membrane is not designed for permanent exposure and must always be protected by a screed, paving slabs, insulation etc.

- Features and benefits:**
- BBA Approved.
 - Water and water vapour barrier.
 - Factory controlled thickness.
 - Elastic and flexible.
 - Damage easily repaired.
 - No drying time.
 - Sulphate resistant.
 - Seldedge strip to improve lap sealing.

Primer: RIW Sheetseal Primer



RIW LAC®

TWO COAT, COLD APPLIED DAMP PROOF MEMBRANE

SIZE: 5LTR - SKU: 014LAC5
25LTR - SKU: 014LAC25

LAC® is typically used as a damp proof membrane to ground floors, as a vapour barrier behind cladding and for tanking of basements. It is also suitable for waterproofing foundation walls, ducts, lintels, columns, beams and similar structures at above and below ground level.

When designing Type A structures (as classified in BS 8102: 2009), the product applied correctly is capable of providing the levels of protection required for Grades 1, 2 & 3 basements.

LAC® may also be applied to the internal face of external walls above ground level to prevent the penetration of moisture. The membrane can then be plastered or dry lined when dry.

LAC® may also be used to provide a barrier to Radon Gas.

- Features and benefits:**
- Water and water vapour barrier.
 - Radon barrier.
 - Elastic and flexible.
 - Easily applied and adapted to difficult details.
 - Sulphate resistant.



FLEXISEAL PRO RED

TWO PART SOLVENT FREE WATERPROOF COATING

SIZE: 5KG - SKU: 014FSPR5
20KG - SKU:014FSPR20

Flexiseal Pro is a two-pack solvent free modified epoxide system that cures to form a seamless and fully bonded waterproof coating. It can be applied in one coat to horizontal areas and in two coats on vertical substrates, speeding up installation programs on fast track construction sites. Generally applied to substrates treated with Flexiseal Pro Primer. Flexiseal Pro is typically used where a high performance waterproof coating/tanking system is required.

When designing Type A structures (as classified in UK BS8102:2009), the product applied correctly, is capable of providing the levels of protection required for Grades 1, 2 & 3 basements. Ideal for use on basements and sub-structures, podium decks, terraces, balconies, ground floor DPM, plant rooms, containment bunds, superstructures and gas-proofing.

- Features and benefits:**
- Water and water vapour barrier.
 - Colour coded for quality control.
 - Seamless & fully bonded coating.
 - Cold applied by hand or spray.
 - Tough and flexible with high substrate adhesion.
 - Good chemical and UV resistance.
 - Effective barrier to carbon dioxide and methane.



RIW TOUGHSEAL

SOLVENT FREE, 2 PART EPOXY COATING

SIZE: 5LTR - GREY: SKU: 014TSSFG5
BLACK: SKU: 014TSSF85
20LTR - GREY: SKU: 014TSSFG20
BLACK - SKU: 014TSSF820

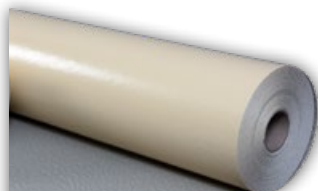
Toughseal is a solvent free polymer modified two-pack epoxy coating, available in two colours.

Toughseal is typically used to provide a barrier to water and water vapour, as a surface applied membrane. It is used in areas that require excellent tensile adhesion, chemical and/or abrasion resistance; such as plant rooms and under raised access floors, ground floor DPM, bunded areas, swimming pools, changing rooms etc,

Toughseal has a Class 1 fire rating and is U.V. Resistant.

- Features and benefits:**
- Excellent tensile adhesion to substrate.
 - Excellent chemical resistance.
 - Seamless and fully bonded.
 - Simple to detail in critical areas.

WATERPROOFING



SIKAPROOF® A+ 08

FPO SHEET MEMBRANE FOR PRE & POST-APPLIED FULLY BONDED BELOW GROUND WATERPROOFING

SIZE: 1M X 25M - SKU: 003SPA081X25
2M X 25M - SKU: 003SPA082X25

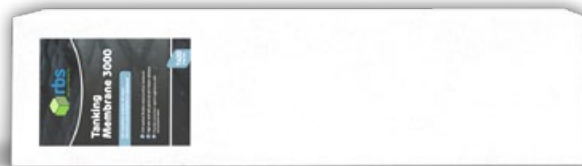
SikaProof® A+ 08 is a polyolefin (FPO) based sheet membrane for below ground waterproofing of reinforced concrete structures. The membrane can be pre or post-applied. A special hybrid bonding layer on the membrane forms a full and permanent dual bond with the concrete structure. Joints are sealed with cold-applied tapes. The total thickness is 1.35 mm with a membrane thickness of 0.80 mm.

Features and benefits:

- Dual bond: full and permanent mechanical and chemical bond with the concrete structure.
- Can be used as a pre and post-applied system.
- No lateral water migration between concrete and membrane.
- High flexibility and crack-bridging capabilities.
- High watertightness tested according to various standards.
- Good resistance to aggressive conditions in natural ground water and soil.
- Temporarily resistant to weathering and UV exposure.
- Can be combined with other approved Sika® waterproofing and joint sealing systems.

Uses:

- Damp-proofing, waterproofing and concrete protection for basements and other below ground concrete structures.
- Precast reinforced concrete structures.
- Cast-in-situ reinforced concrete structures.
- Existing reinforced concrete structures.



rbs TANKING MEMBRANE 3000

SELF ADHESIVE RUBBER / BITUMEN POLYETHYLENE WATERPROOF MEMBRANE

SIZE: 1M X 20M - SKU: 004TM3000

rbs Tanking Membrane 3000 is a cold applied, flexible waterproofing membrane combining a special high performance cross laminated, HDPE carrier film with a self-adhesive rubber bitumen compound. It is supplied to sites in rolls 1.5mm thick, 1m wide and 20m long and is unrolled sticky side down onto a concrete binding, concrete slabs or bonded to vertical concrete faces that have been primed. Continuity is achieved by overlapping 50mm and firmly rolling the joint. It is extremely flexible and will bridge shrinkage cracks in concrete.

Features and benefits:

- Waterproof - capable of resisting a hydrostatic head when fully supported.
- Cross laminated film - provides dimensional stability, high tear strength, puncture and impact resistance.
- Cold applied - no heating, self adhesive overlaps ensure continuity.
- Chemical resistant - provides effective external protection against aggressive soils and ground water.
- Flexible - accommodates minor settlement and shrinkage movement.
- Controlled thickness - factory made sheet ensures constant, non variable site application.

Primer: rbs Tanking Membrane Primer



BBA
Approved



VANDEX BB 75

GREY WATERPROOFING SLURRY

SIZE: 25KG - SKU: 120BB75G

Vandex BB 75 is a BBA approved cementitious, ready-mixed surface waterproofer (tanking slurry). Owing to its composition of cement, quartz with graded grain-size distribution and selected additives, Vandex BB 75 is waterproof. It can be employed against active and passive water pressures. The initial and final bonding capability is excellent, making it suitable to be applied to horizontal as well as vertical surfaces. It is durable, resistant to frost and heat after setting, but all the same permeable to vapour. Tested for use in contact with drinking water.

Features and benefits:

- Against active or passive water pressure.
- For concrete and masonry.
- Efflorescence free.
- Applicable by spray equipment.

Uses:

- Substrates: concrete and masonry.
- Active or passive waterproofing and protection against water and moisture.
- Drinking water structures.
- Foundations, slabs, retaining walls, etc.



VANDEX PLUG

RAPID SETTING WATER STOP

SIZE: 15KG - SKU: 120PLUG

Vandex Plug is a cementitious, rapid setting compound which when mixed with water forms a thick paste designed to stop leaks in 30 seconds. It can be used internally or externally as a waterproof plugging mortar or where rapid setting and early strength gain is required.

Features and benefits:

- Stops water flow.
- Sets in approx. 30 seconds after mixing.
- Durable.
- Can be used underwater.
- Can be mixed with water or used dry.
- Easy application.

Uses:

- Plugging water leaks and seepage.
- Sealing leaking cracks.
- Sealing wet surfaces.
- Plugging leaks in earthenware pipes.
- Caulking tunnel segment joints.
- Fixings in water structures where immediate use is required.
- Installation of steel elements in concrete or masonry (e.g. rail stanchions).
- Erosion resistant mortar for elements affected by rain.
- Erosion resistant shoring of canal sealing.
- Underwater work (access permitting).

SELF-LEVELLING FLOORING



ARDITEX NA

ULTRA RAPID SETTING LATEX
SUBFLOOR LEVELLING AND
SMOOTHING COMPOUND

SIZE: NA POWDER 20KG - SKU: 005NAP
NA LATEX 4.85KG - SKU: 005NAL

ARDITEX NA is a self-smoothing, protein free, latex levelling compound with improved flow and excellent adhesion, flexibility and moisture resistance. These unique properties ensure that ARDITEX NA can be used with confidence over almost all subfloors without priming, including ceramic tiles, bitumen and flooring grade plywood. Resilient floor coverings can be installed after just 4 hours and ceramic tiles in as little as 3 hours. No ammonia.

Features and benefits:

- Install floor coverings after 4 hours, and ceramic tiles in as little as 3 hours.
- Can be used with confidence over old adhesive residues including bitumen.
- Excellent adhesion without priming to almost all substrates, including flooring grade plywood, ARDEX Damp Proof Membranes and even ceramic tiles.
- Unaffected by moisture, can be used under an ARDEX Damp Proof Membrane and direct to damp concrete.
- Feather edge to 12mm in one application.
- Apply up to 30mm incorporating ARDEX Coarse Aggregate.
- Suitable for use on floors with underfloor heating.



WEBERFLOOR 4310

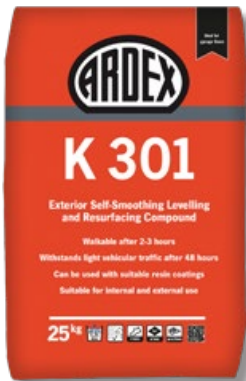
SELF-SMOOTHING BASE &
RENOVATION SCREED

SIZE: 25KG - SKU: 001F4310FF

weberfloor fibre 4310 is a pump or hand applied, self-smoothing, fibre-reinforced base or renovation screed for floors, with Low Dust Technology™, which gives a strong base layer for receiving tiles or a thin topping screed. The product is formulated from special cements, aggregates and chemical admixtures. weberfloor fibre 4310 is designed for the use in residential and commercial areas allowing a much earlier overlay compared to traditional sand/cement, concrete or anhydrite screeds. It is ideal for the renovation of existing floors and floating floor constructions. It is essential the substrate is suitably primed with weberfloor 4716 Primer prior to installing the Weber floor screed.

Features and benefits:

- For application depths between 5-50mm.
- Weber Low Dust Technology™ improves comfort of applicators.
- Pump or hand applied.
- Rapid drying.
- Foot traffic after 2-4 hours.
- Tile after 12 hours.
- Final floor covering installed after 1-3 weeks in normal conditions.
- Fibre modified for added durability.
- Low alkalinity and casein-free.
- Low emissions.



ARDEX K 301

EXTERIOR SELF LEVELLING
CONCRETE RESURFACING
COMPOUND

SIZE: 25KG - SKU: 005K301

ARDEX K 301 is a Fast Setting Resurfacing and Levelling Compound for Concrete. ARDEX K 301 is a grey powder consisting of special cements, graded aggregates and high quality synthetic resins. When mixed with water, a fluid mortar is produced which sets after approximately 1 hour and can normally be walked on after 2-3 hours at 20°C. ARDEX K 301 can be applied from 2mm to 20mm in a single application. The set and hardened ARDEX K 301 is usually ready to receive light rubber wheeled traffic after 48 hours at 20°C.

Features and benefits:

- Flowable Cementitious Levelling and Repair Mortar - for the repair and levelling of rough or damaged concrete.
- Suitable for internal and external applications onto concrete and bonded cement/sand screeds.
- For smoothing and resurfacing paths, drives, parking areas, courtyards, etc.
- Fast setting - walkable after 2-3 hours.
- Rapid hardening - can withstand light vehicular traffic after 48 hours.
- Easy to mix and apply – pumpable.
- Apply from 2mm to 20mm thick in a single application.
- Can be painted or used with suitable resin coatings.



SX220

SELF LEVELLING COMPOUND

SIZE: 20KG - SKU: 074SX22020

SX220 is a fast setting cement based smoothing product. It is ideal for use in domestic and light commercial environments as an underlayment, prior to application of carpet, wood and vinyl flooring.

Features and benefits:

- May accept foot traffic after approximately 2 hours.
- Excellent flow for smoothing uneven floors.
- Suitable for use before laying floor coverings.
- Low odour and low VOC.
- It is easy to mix and apply and a smooth surface is produced.

Uses:

- For the preparation of laying most floor coverings.
- Can be used on a variety of substrates including:
 - Concrete
 - Screed
 - Existing Tiles
 - Timber floors

RESIN-BASED GROUTS



CONBEXTRA EPR

EPOXY RESIN FREE-FLOW GROUT

SIZE: 15LTR - MID GREY - SKU: 002EPR16

Epoxy resin free-flow grout conforming to the requirements of BS EN1504-3 Class R4 and BS EN 1504-6 Anchoring of reinforcing steel bar. Used for grouting gap thickness from 10 to 120 mm under baseplates, crane rails, turbines where heavy dynamic loads are encountered and areas where chemical spillage may occur.

A three-component system consisting of base resin, liquid hardener and specially graded inert fillers, which are mixed and poured into the gap.

Features and benefits:

- Low creep characteristics under sustained loading.
- Resistant to repetitive dynamic loads.
- Non-shrink, ensuring complete surface contact and bond.
- High compressive, tensile and flexural strengths.
- Fast, convenient installation with rapid strength gain.
- Withstands a wide range of chemicals.
- Two grades available for gap widths 0.25 - 10mm and 10 -120 mm.

Uses:

- For grouting under baseplates, crane rails, turbines where heavy dynamic loads are encountered and areas where chemical spillage may occur.
- Typical applications include: Reciprocating machinery, Testing equipment, Heavy crane and transporter rails, High speed turbines, Centrifuges, Drop forges, Electroplating and chemical plants, Anchoring of steel bars.



HIGHWAYS PM04

POLYESTER RESIN MORTAR

SIZE: 25KG - SKU: 020PY4



Larsen PM04 is a two component multi-purpose polyester resin mortar for use in the installation, raising and reinstatement of ironwork, up to and including installation Group 4 of BS EN 124 where rapid trafficking is required. It is ideal for fixing of utility access cover and frames, highways ironwork, duct frames and precast concrete units.

Features and benefits:

- HAPAS / BBA Approved.
- Exceptional early and ultimate strengths.
- Rapid return to service.
- Open early to traffic, 60 minutes.
- Bed Depth 5-50mm.
- Easy to use.

Uses:

- It is particularly suited for use in critical locations and heavily trafficked areas.
- It is ideal for fixing of utility access cover and frames, highways ironwork, duct frames and precast concrete units.



rbs P400C

2 PART STYRENE BASED POLYESTER RESIN

SIZE: 400ML - SKU: 004P400

rbs P400C is a styrenated polyester resin 400ml coaxial cartridge system with a resin to hardener ratio of 10 parts to 1. The cartridge has a coaxial nozzle outlet and is sealed with the screw cap.

Features and benefits:

- Versatile.
- Anchoring without expansion pressure.
- Fixing close to free edges.
- Medium / high load capacities.

Uses:

- Anchor sockets.
- Fixing externally threaded rods.
- Concrete reinforcing bars.
- Securing profiled sections and bars.



rbs INJECTION RESIN LV KIT

CONCRETE CRACK INJECTION REPAIR KIT

SKU: 004CIRK

rbs Injection Resin LV Kit; specially formulated as a two component, low viscosity, fast curing epoxy sealing system for repairs to cracks in concrete and solid masonry.

Features and benefits:

- Low viscosity, rapid curing crack sealer and epoxy-based injection resin.
- As strong as concrete when cured.
- Low viscosity, 100% solids epoxy.
- No drilling required, no need to excavate.
- Cartridges that fit into standard sealant guns.
- Comes with convenient mixer nozzles for both the crack sealer and injection resin.
- Perforated box to hold injection ports.

Uses:

- Low pressure injection of cracks in concrete and solid masonry.
- Gravity feed of cracks in horizontal concrete and horizontal masonry.
- Fast repairs to concrete and masonry cracks.
- Suitable for walls and floors.

CONCRETE REPAIR



RENDEROC HB

LIGHTWEIGHT CONCRETE
REINSTATEMENT MORTAR

SIZE: 18KG - SKU: 002HB

High performance lightweight concrete reinstatement mortar conforming to the requirements of BS EN 1504-3 Class R2. For the reinstatement of concrete where low permeability characteristics are required but where high compressive strength is not the most important consideration. For use if high compressive strengths and low permeability characteristics are required. Specifically developed for vertical and overhead repair work.

Primer: Nitoprime Zincrich Plus



RENDEROC GP

MEDIUM WEIGHT CONCRETE
REINSTATEMENT MORTAR

SIZE: 25KG - SKU: 002GP

High performance medium weight concrete reinstatement mortar conforming to the requirements of BS EN 1504-3 Class R3. For the reinstatement of concrete where low permeability characteristics are required but where high compressive strength is not the most important consideration. Specifically developed for vertical repair work.

Primer: Nitoprime Zincrich Plus



SIKA MONOTOP®-615

R3 CEMENTITIOUS HIGH BUILD
CONCRETE REPAIR MORTAR

SIZE: 25KG - SKU: 003MT61525

Sika MonoTop®-615 is a one component cement based polymer modified high build repair and reprofiling mortar, meeting the requirements of Class R3 of BSEN1504-3. For repairing all types of structures, overhead and vertical repairs, hand applied repairs, spray applied repairs, in place of R1 and R2 mortars. Pre-bagged, just add water, low wastage.



WEBERCEM ADVANCED REPAIR CONCRETE

FLOWING RECASTING REPAIR CONCRETE

SIZE: 25KG - SKU: 001ARC

A pre-blended cementitious repair concrete which complies with the National Highways Specification for Highway Works white book Series 5700 Structural Concrete. Conformity testing to BS EN 1504-3 has confirmed that webercem advanced repair concrete meets the requirements for a Class R4 repair product. Ideally suited in structural elements where reinforcement is congested. Shrinkage-compensated to avoid shrinkage cracks and enhance durability.



SIKA MONOTOP®-630 RAPID

R4 FAST SETTING CEMENTITIOUS
REPAIR MORTAR

SIZE: 25KG - SKU: 003RRM25

Sika MonoTop®-630 Rapid is a 1-component fast setting cementitious repair mortar, meeting the requirements of Class R4 of BS EN 1504-3. Used for repairing all types of structures, including overhead and vertical repairs; hand applied repairs; floor slabs and car park decks; for exterior and interior use; in place of R1, R2 and R3 mortars.



NATCEM 35

FAST SETTING & CURING MORTAR

SIZE: 25KG - SKU: 176NC3525

Natcem 35 is an environmentally friendly, fast setting mortar with rapid strength gain, suitable for installation up to any thickness from a minimum of 10mm. The product is suitable for a wide range of applications and starts to set after 35 minutes and is totally set in 40. It can be used in cold, wet or underwater conditions and is also DWI Reg.31 approved for contact with potable water with only a 30-minute curing period required after set.



MAPEI PLANITOP SMOOTH & REPAIR R4 ZERO

SUSTAINABLE, RAPID SETTING
FIBRE REINFORCED MORTAR

SIZE: 25KG - SKU: 096PTSR4Z25

A one-component, thixotropic R4 mortar made from special, highly reactive hydraulic binders, fine selected aggregates, synthetic polyacrylonitrile fibres, synthetic polymers and special admixtures. For structural repairs and smoothing over internal and external horizontal and vertical concrete surfaces; suitable for repairing structures exposed to the open air and in permanent contact with water.

Features and benefits:

- Excellent adhesion to both old concrete and steel reinforcement.
- High dimensional stability, low risk of cracking and crazing during both the plastic phase and when hardened.
- Thermal compatibility to freeze/thaw cycles, measured as adhesion according to EN1542.
- High resistance to carbonation and impermeable to water.

Uses:

- Rapid repair work on deteriorated concrete beams, pillars, buffer walls, cornices, edges of balconies and structural members and elements that require the use of mortar with high mechanical performance characteristics.
- Quickly smoothing over surface defects in cast concrete, such as deep gravel clusters, spacer holes, second pours, etc. before painting the surface.
- Repairs and structural strengthening of concrete.
- Repairing precast concrete members and elements.
- Repairs to concrete damaged by rusty reinforcing bars due to carbonation.

CONCRETE LIQUID ESSENTIALS



rbs BLUELEASE FORMWORK OIL

SIZE: 5LTR - SKU: 004BL5
20LTR - SKU: 004BL20

rbs Bluelease is an extremely versatile high specification chemical release agent blended with highly active surfactants. The blend of highly active surfactants assist in reducing surface tension at the interface between the concrete and the formwork, ensuring that optimum release is attained hence achieving a high quality concrete surface finish.



rbs BRICK & MORTAR CLEANER

POWERFUL ACID BASED CLEANER

SIZE: 5LTR - SKU: 004BMC5
20LTR - SKU: 004BMC25

rbs Brick & Mortar Cleaner is a specially selected blend of inorganic acids for the removal of all cement based contamination and rust from a wide range of surfaces. Can be diluted or used as concentrate. Efficient removal of mortar stains and efflorescence from brickwork.



rbs GREENCURE SEALER

SEALER, DUSTPROOFER & HARDENER

SIZE: 5LTR- SKU: 004GCS5
20LTR - SKU: 004GCS20

rbs Greencure Sealer is a ultra low odour single pack white polymeric aqueous emulsion designed to impregnate concrete surfaces thus acting as a curing aid, surface sealer, dust proofer and hardener.



rbs GREENCURE WB

WATER BASED CONCRETE
CURING AGENT

SIZE: 5LTR- SKU: 004GCWB5
20LTR - SKU: 004GCWB20

Environmentally friendly concrete curing membrane that prevents the premature drying out of the concrete surface thereby reducing the risk of surface cracking and dusting. Silane compatible, guaranteed not to adversely affect the bond of subsequent coatings, screeds or renders.

JOINT SEALING



SIKAFLEX® PRO-3 PURFORM

POLYURETHANE SEALANT FOR
FLOOR JOINTS AND CIVIL
ENGINEERING APPLICATIONS

SIZE: 600ML FOILS
GREY - SKU: 0033PFG600
BLACK - SKU: 0033PFB600

Sikaflex® PRO-3 Purform is a 1-part, moisture curing, elastic polyurethane sealant. It seals many kinds of joint configurations in floors and civil engineering structures. The elasticity is maintained over a wide temperature range and high mechanical and chemical resistance provides good durability.

Features and benefits:

- Movement capability ±25% (ISO11600) and ±50 % (ASTM C920).
- Fast development of mechanical properties.
- High mechanical and chemical resistance.
- High resistance to weathering.
- Bubble-free curing.
- Good durability.
- Good adhesion to most construction materials.
- Non-staining to a wide range of substrates.

Uses:

- Horizontal and vertical interior and exterior sealing joint applications in: the food industry, cleanrooms, warehouse and production floor areas, sewage treatment plants, tunnels, car parks and pedestrian and traffic areas.

Primer: Sika Primer 3N



FOSROC THIOFLEX 600

POLYSULPHIDE LIQUID
POLYMER SEALANT

SIZE: GG 2.5LTR - SKU: 002600GG
PG 5LTR - SKU: 002600PG

Thioflex 600 is available in gun and pouring grades. The gun grade is ideal for general application. It is packed in a ready to mix, 2.5 litre tin containing the base and curing agent in the correct proportions. The pouring grade for joints in horizontal surfaces is supplied in 5 litre packs with the base and curing agent in separate tins.

Thioflex 600 is particularly recommended for use in high-rise buildings and other applications where access for subsequent maintenance will be difficult and the risk of early movement failure must be minimised. It is also suitable for sealing joints in brickwork, retaining walls, basements and subways. Thioflex 600 pouring grade is recommended for initial sealing of expansion joints and stress relief joints in floors and sealing other horizontal surfaces.

Features and benefits:

- Meets key international standards.
- Forms a tough, elastic, rubber-like seal.
- Accommodates continuous and pronounced cyclic movement.
- Excellent adhesion to most common substrates, including primed concrete, glass, aluminium and stainless steel.
- High resistance to ageing reduces physical damage due to climatic extremes.

Primer: Fosroc Primer P7

JOINT SEALING



PYROCOUSTIC® SEALANT

WATER BASED, ACRYLIC, ABLATIVE SEALANT

SIZE: 310ML - WHITE - SKU: 175PCW310

Other colours are available on request

Pyrocoustic® Fire Resistant Sealant is a water based, acrylic, ablative sealant used to reinstate the fire resistance of wall and floor constructions in linear gap seals and where apertures are penetrated by single or multiple services.

Features and benefits:

- Easy application.
- Good adhesion to a variety of surfaces.
- Can be used in a wide range of temperatures.
- Low emission levels of VOCs.

Uses:

- To reinstate fire resistance through rigid floors.
- To reinstate fire resistance through rigid and flexible walls.
- Linear construction joints.
- Single service penetrations.
- Multi-service penetrations.
- Blank openings.



NITOSEAL MS600

ONE PART, ENGINEERING SEALANT

SIZE: 600ML FOILS

GREY - SKU: 002MS600G

BLACK - SKU: 002MS600BL

Nitoseal MS600 is suitable for sealing movement joints in buildings and civil engineering structures including joints that will be subject to intermittent or permanent immersion. It has a fast rate of cure and forms a tough, highly durable and water resistant elastomer.

Features and benefits:

- Recommended for use in contact with potable water.
- Meets key international standards.
- Resistant to aerobic and anaerobic bacteriological attack.
- Exhibits excellent water resistance.
- Excellent resistance to dilute acids and alkalis.
- Cures to a tough, elastic rubber seal.
- Accommodates continuous and pronounced cyclic movement.
- High resistance to ageing, reduces physical damage due to climatic extremes.
- Single component yet fast rate of cure.
- Easy to apply at low temperature.
- Can be applied to damp substrates.
- Isocyanate free technology.

Uses:

- Typical applications include: potable water tanks, reservoirs, sewage tanks, sea walls, basements, subways, parapets, bridges, superstructures.



HYDROCELL XL

10MM SHEET (1000MM X 2000MM) - SKU: 002HY10

15MM SHEET (1000MM X 2000MM) - SKU: 002HY15

20MM SHEET (1000MM X 2000MM) - SKU: 002HY20

25MM SHEET (1000MM X 2000MM) - SKU: 002HY25

Hydrocell XL is a cross linked semi-rigid closed cell polyethylene sheet material used for forming or filling expansion joints between adjacent in-situ or pre-cast components. Hydrocell XL provides excellent support backing to elastomeric sealants and is especially recommended for use in expansion joints in brickwork and in the construction of water retaining and water excluding structures.



POLYJOINT STRIP

MOST POPULAR SIZES:

10MM X 100MM X 10M

10MM X 150MM X 10M

20MM X 100MM X 2M

20MM X 450MM X 2M

Polyjoint is manufactured from the original high quality cross linked closed cell polyethylene foam used as an Expansion Joint Filler in both brickwork and concrete. Clean and light to handle, cut strips are supplied with a tear-off strip to form a sealant rebate. High level of chemical and ozone resistance.



JOINT BACKER ROD

MOST POPULAR SIZES:

10MM X 1M 13MM X 1M

15MM X 1M 20MM X 1M

25MM X 1M

Closed cell polyurethane backer rod for use as a backer in expansion joint sealing to avoid three sided adhesion. Quick and easy to use. Improves sealant performance by giving the correct joint size.



FIBREBOARD SHEET

MOST POPULAR SIZES:

12MM X 1.22M X 2.2M

20MM X 1.2MM X 2.2M

Multi purpose bituminous Wood Fibre Fillerboard for is used as an expansion joint filler for concrete slab and wall construction.

ROOFING



SIKALASTIC® D-10 ROOFPRO

1 PART, POLYURETHANE
WATERPROOFING MEMBRANE

SIZE: 15LTR - STORM GREY - SKU: 003SL6187011
15LTR - CLOUD GREY - SKU: 003SL6187045

Other colours and sizes are available on request

Sikalastic® D-10 RoofPro is a one-component cold applied moisture triggered polyurethane membrane. It cures to form a seamless and durable waterproofing solution for exposed roof areas and structures.

Features and benefits:

- Single component – No mixing easy and ready to use.
- Cold applied – requires no heat or flame.
- Seamless membrane.
- Compatible with Sika® Reemat Premium – easy to detail.
- Easily recoated when needed – no stripping required.
- Economic – provides a cost efficient life cycle extension of failing roofs.
- Vapour permeable – allows substrate to breathe.
- Elastic – retains flexibility even at low temperatures.
- Good adhesion to most substrates.
- Fast curing – Free from rain damage almost immediately on application.

Uses:

Sikalastic® D-10 RoofPro may only be used by experienced professionals.

- For roof waterproofing solutions in both new construction and refurbishment projects.
- For roofs displaying complex detail areas even when accessibility is limited
- For cost efficient life cycle extension of failing roofs.

For Use With: Sikalastic® Reemat



MAPEI PURTOP EASY GREY

1 PART, POLYURETHANE
WATERPROOFING MEMBRANE

SIZE: 15KG - SKU: 096PTEG25

BBA
Approved

Mapei Purtop Easy is a one component coloured ready-to-use waterproof polyurethane resin system designed for roofs terraces and balconies. A highly elastic and durable finish that guarantees substrates are completely waterproof even at low temperatures. Easy to apply by roller or spray on both horizontal and vertical surfaces.

Features and benefits:

- High elastic and durable membrane- the Purtop Easy System Roof has a certified service life of 25 years according to ETAG 005.
- Excellent adhesion.
- Excellent crack bridging properties with is able to withstand normal dynamic stresses acting on structures.
- Excellent and full adhesion to substrates thanks to the range of primers.
- Resistant to low temperatures down to -20°C.
- CE marked and BBA Approved.

Uses:

- For new roofs and repairs to existing roofs, terraces balconies walkways and pedestrian areas in general, green roofs.
- Can be applied to: concrete cementitious screeds ceramic fibre-cement boards old bituminous membranes metal, walls, basements, subways, parapets, bridges, superstructures.

For Use With: Mapei Mapetex FG

PURTOP EASY



Purtop Easy is a **BBA certified** coloured, elastic, polyurethane waterproofing membrane designed for roofs, terraces and balconies. Purtop Easy provides a durable finish that guarantees substrates are completely waterproof, even at low temperatures. **Purtop Easy** achieves a classification of **BROOF(t4)** under BS EN 13501-5 : 2005 and it has a service life of at least 25 years.

